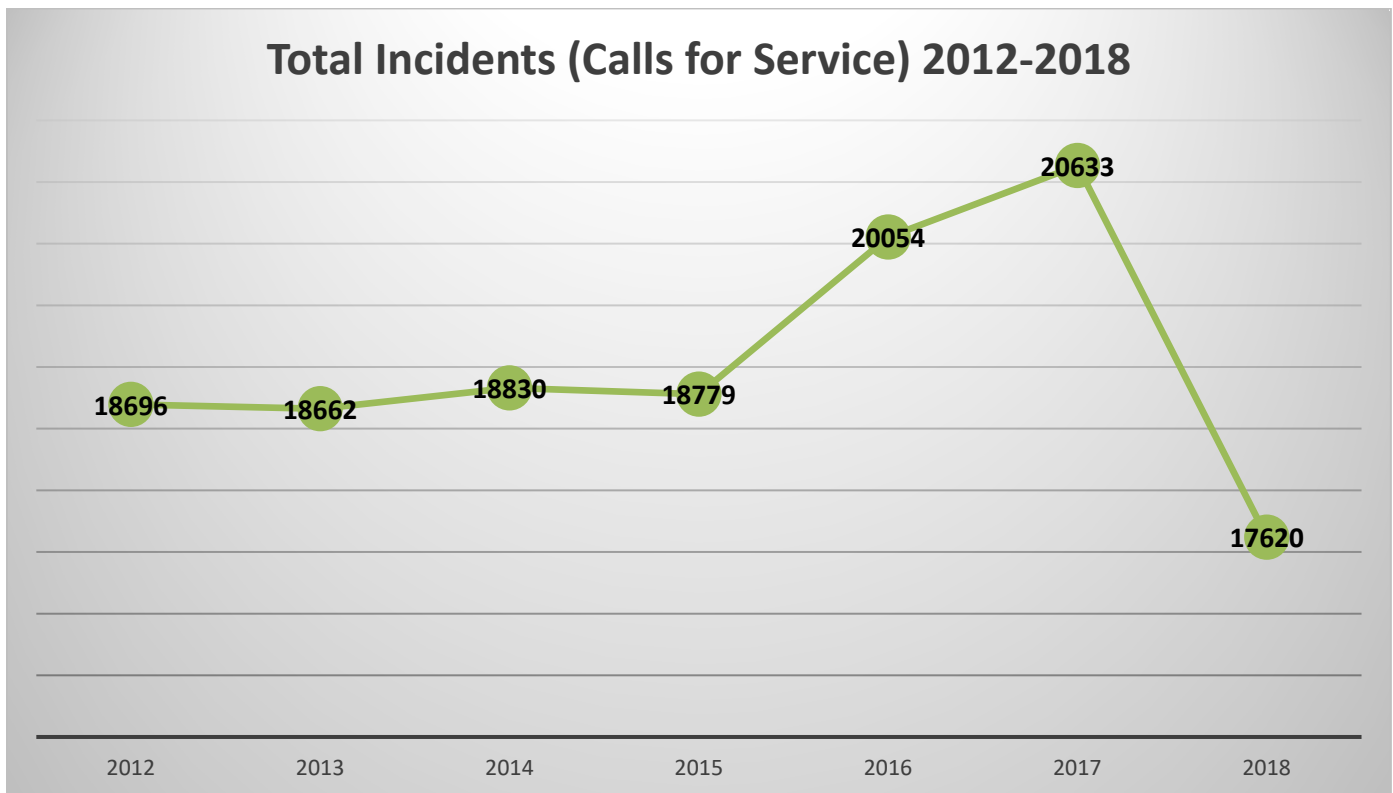


# Shafter Police Department

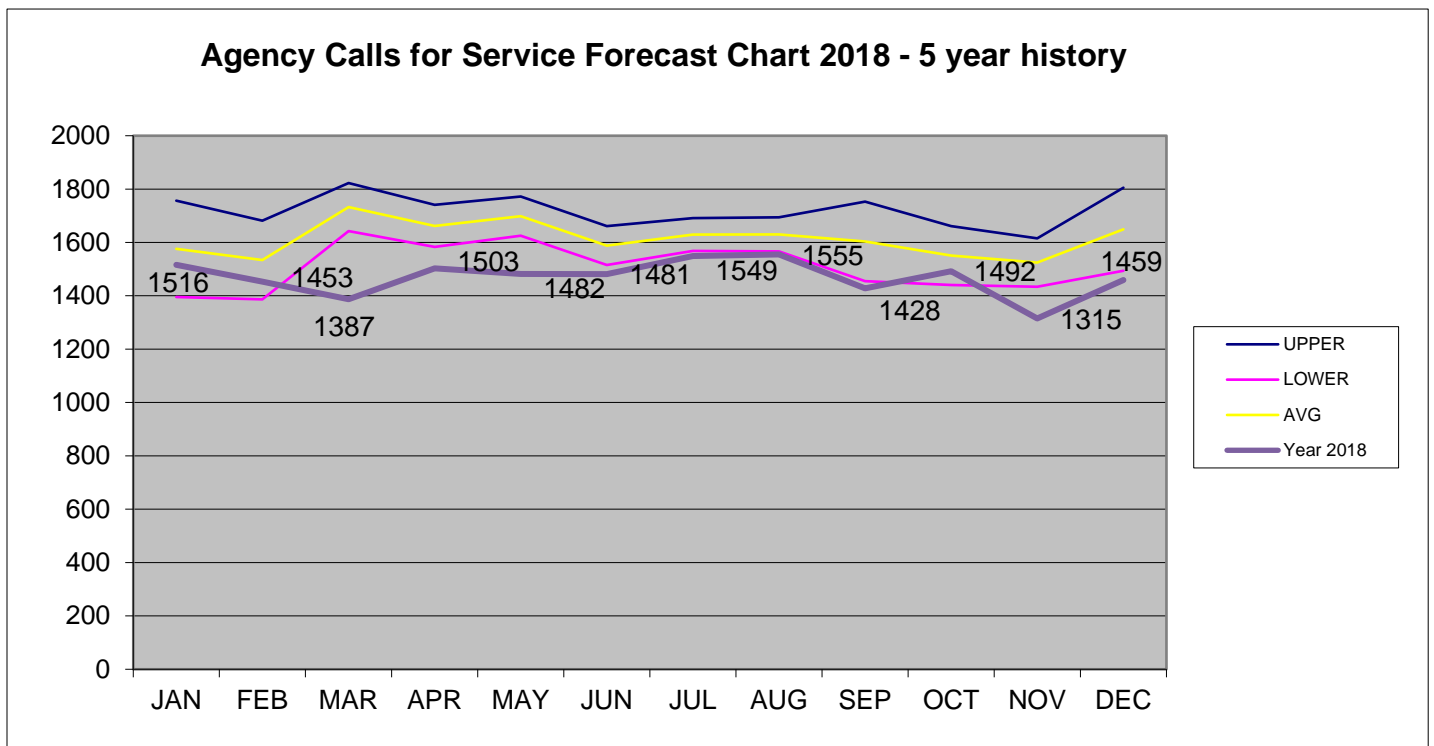
## 2018 End of Year Report

---

The Chief of Police has asked for quarterly and year end reports to present to the City Manager and City Council demonstrating the activities of the Shafter Police Department. This report contains a variety of forecasting charts and summary tables of activities performed by the police department. In the chart below, you will find the statistical picture of how many calls for service the department received in 2018.



A breakdown of the agency calls for service may be represented by the forecasting chart below:

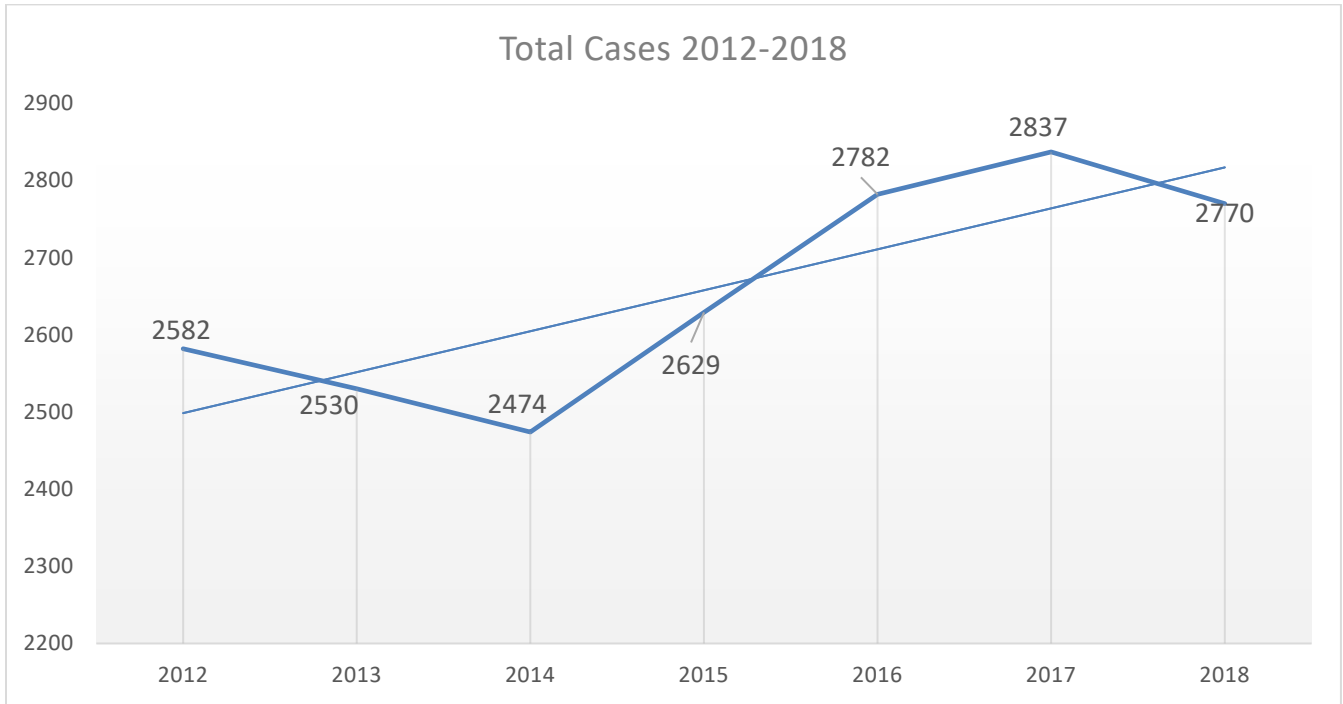


Essentially, the upper dark line shows the highest number of recorded calls for service by month for the last 5-year period. The lower teal color line at the bottom shows the lowest number of calls by month recorded for the last 5 years. The yellow line forecasts where the agency could anticipate calls or activities based on the forecasting calculations.

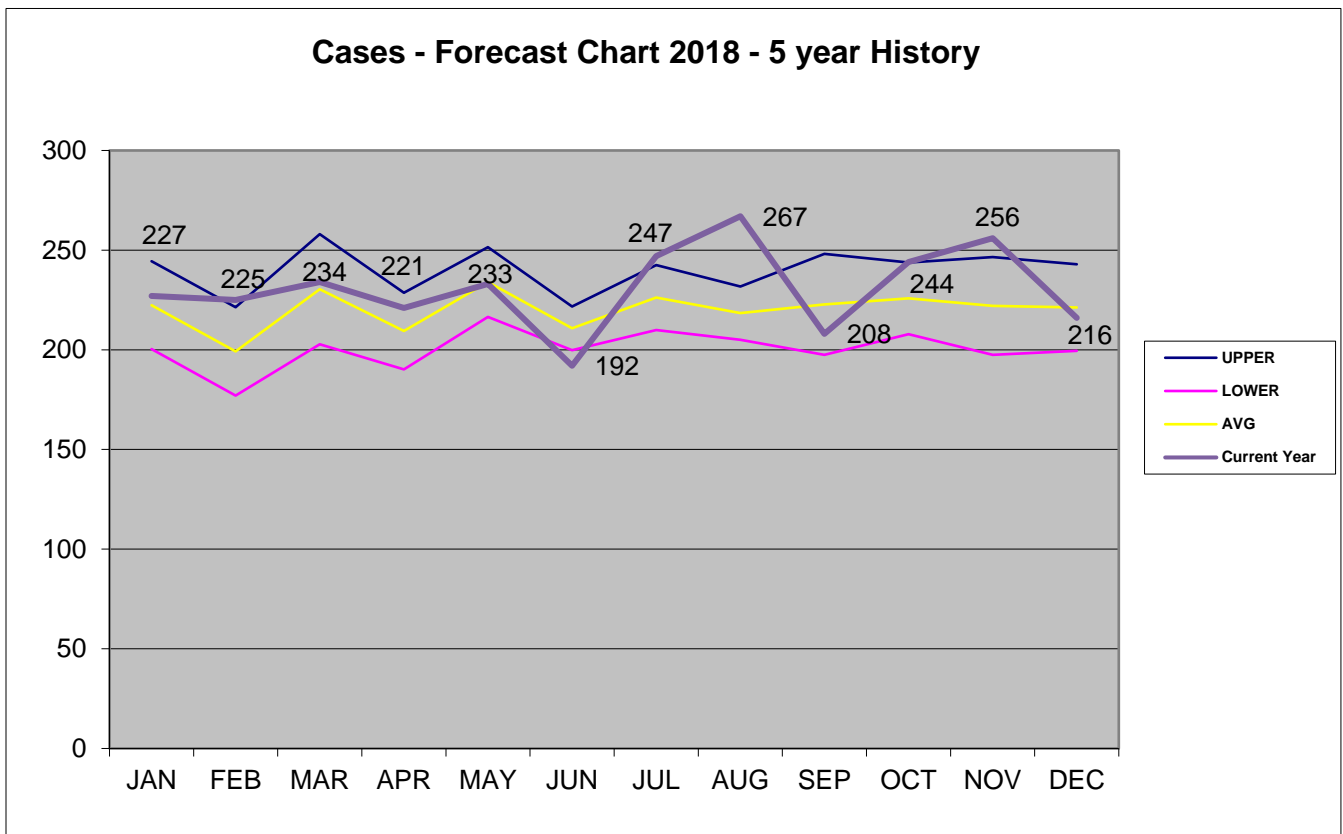
The thick purplish line just between the yellow and bottom pink line tracks the actual calls for service during the first and second quarters of 2018. This represents the total number of incidents handled by officers or initiated by officers (such as traffic stops). The number of calls into the police department are not quantified and do not always result in an officer response, some are fire/ambulance transfers or similar activities.

In light of the above, one might ask of the total incidents the department responded to, what was the result? The following pages will highlight some of the activities that resulted in the total number of incidents.

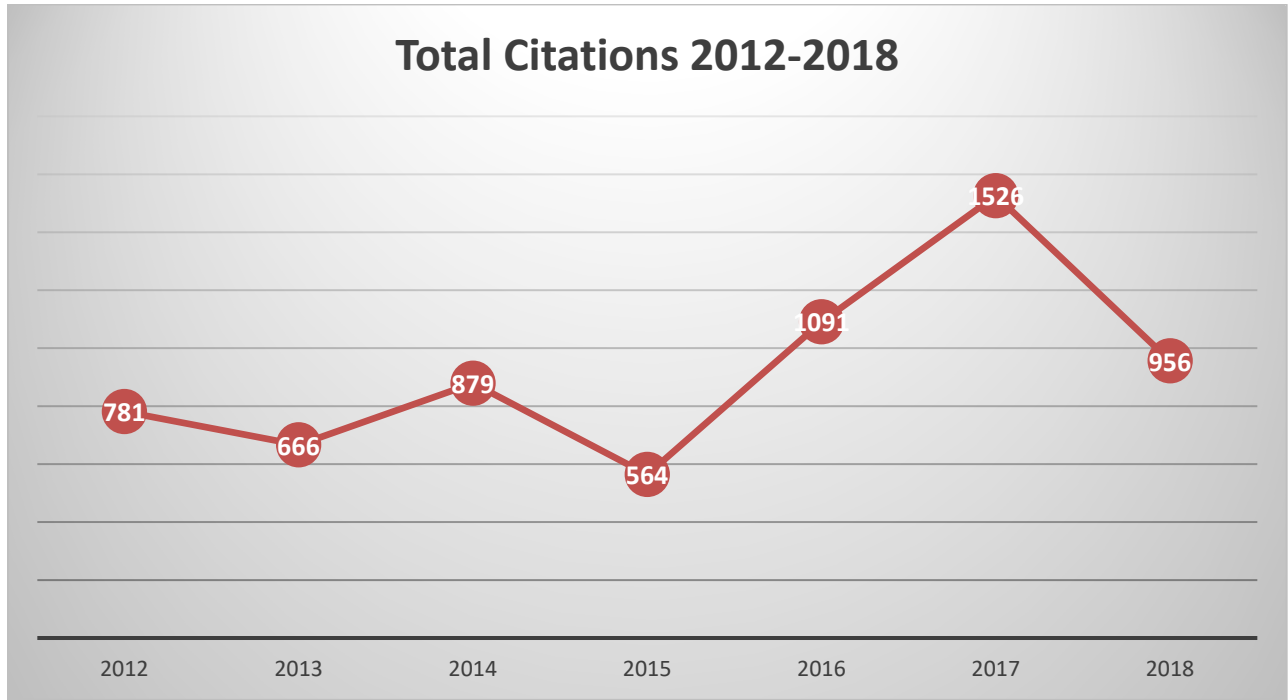
Of the 17,620 calls for service received by the Shafter Police Department in 2018, Officers pulled 2,770 criminal (felony, misdemeanor or traffic related) cases.



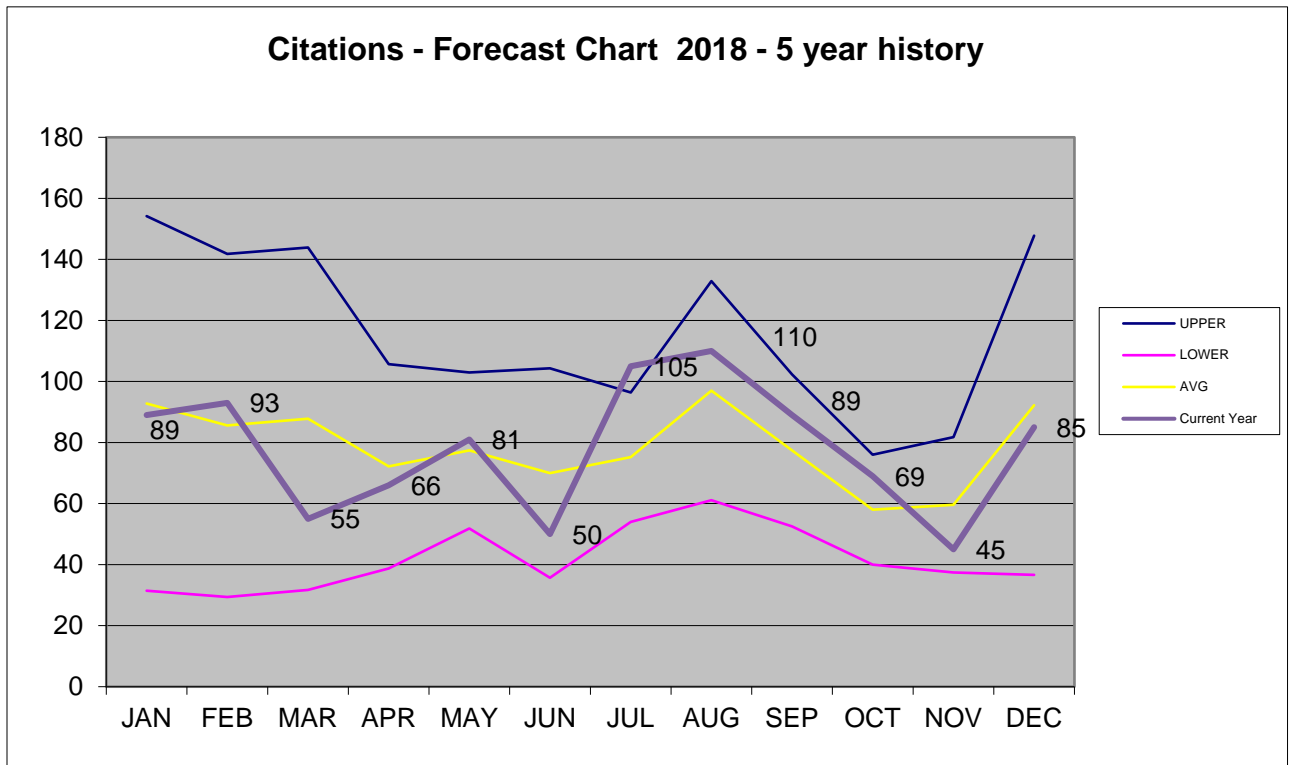
A five-year forecasting of crime case reports by month can be found below:



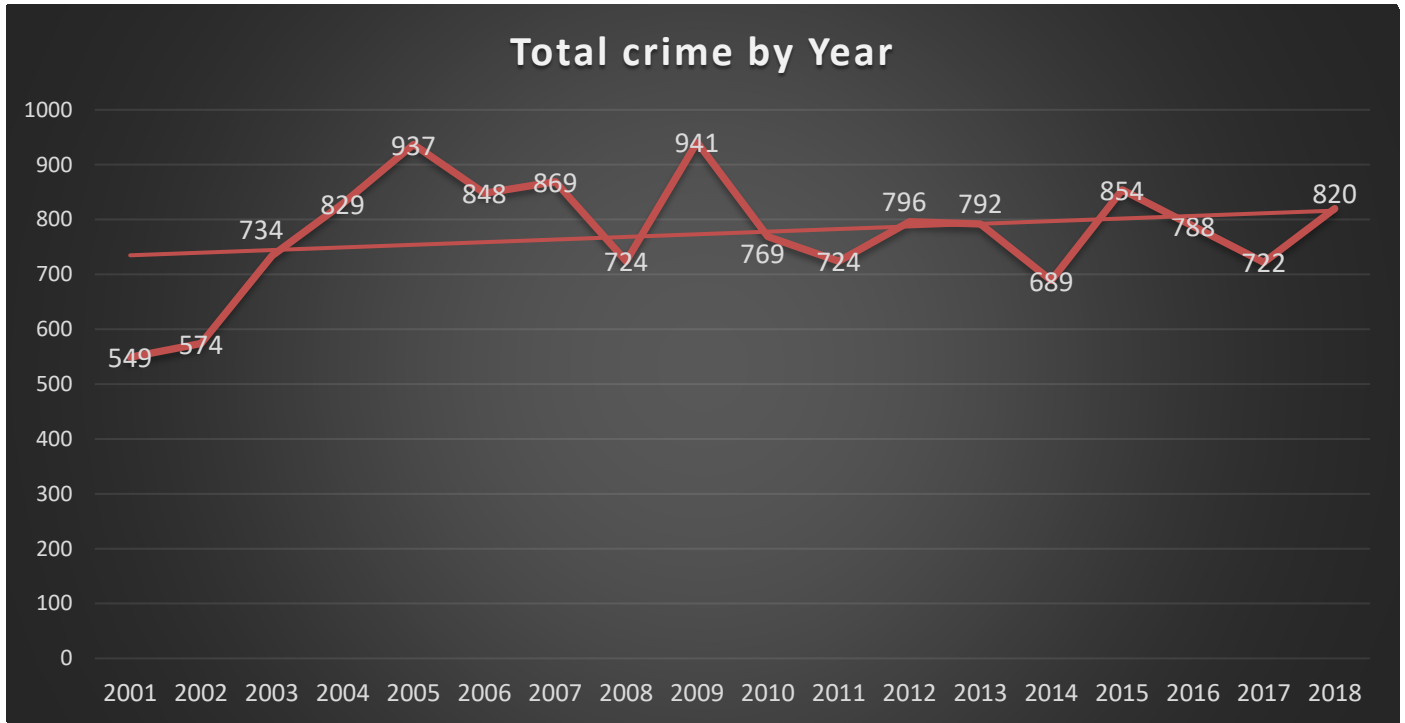
Likewise, of the 17,620 calls for service, in 2018 the agency wrote 956 citations, (Parking citations included).



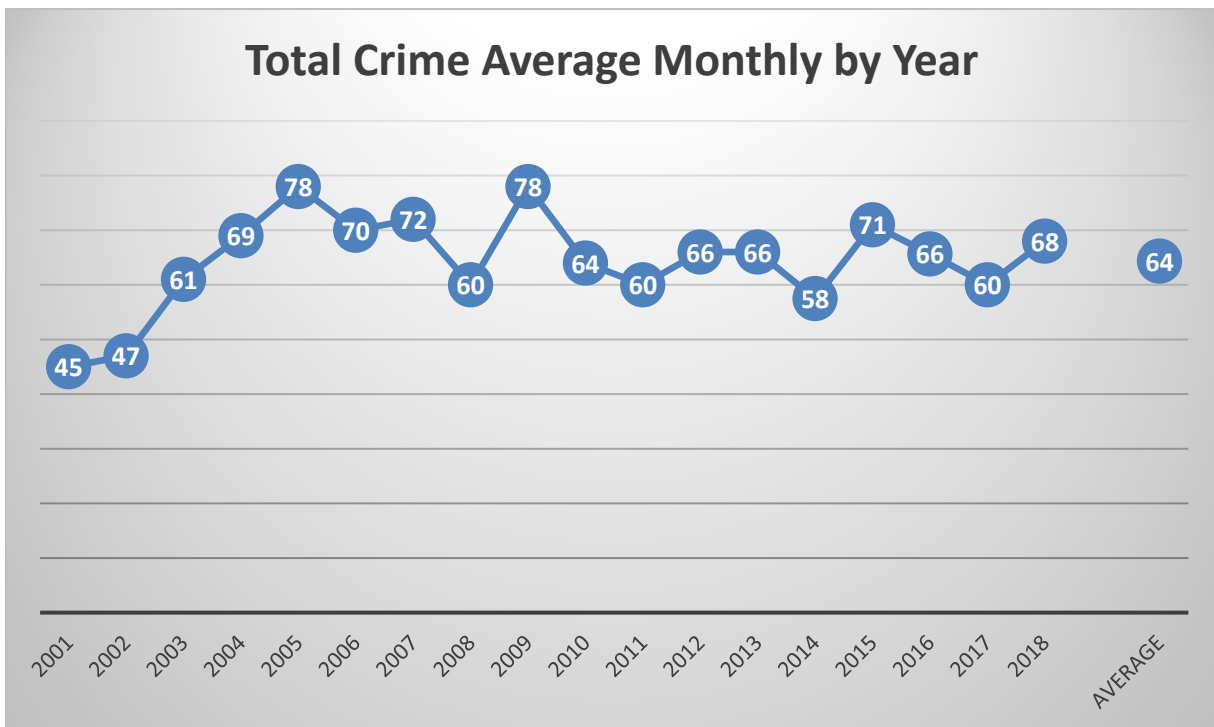
Again, looking at the 5-year citation forecasting chart will show the month by month comparison for citation activity.



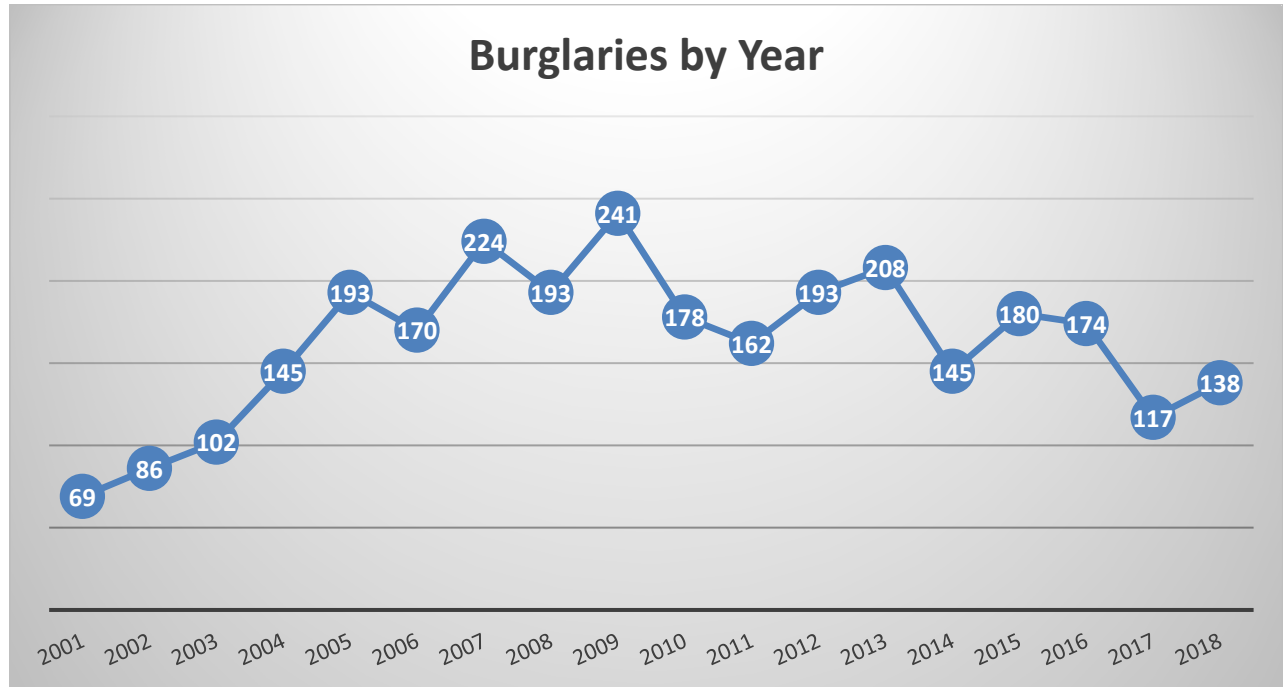
Moving on to examining the actual crimes which occurred in the City of 2018, the following chart shows the total crime trend by year since 2001 through the end of 2018.



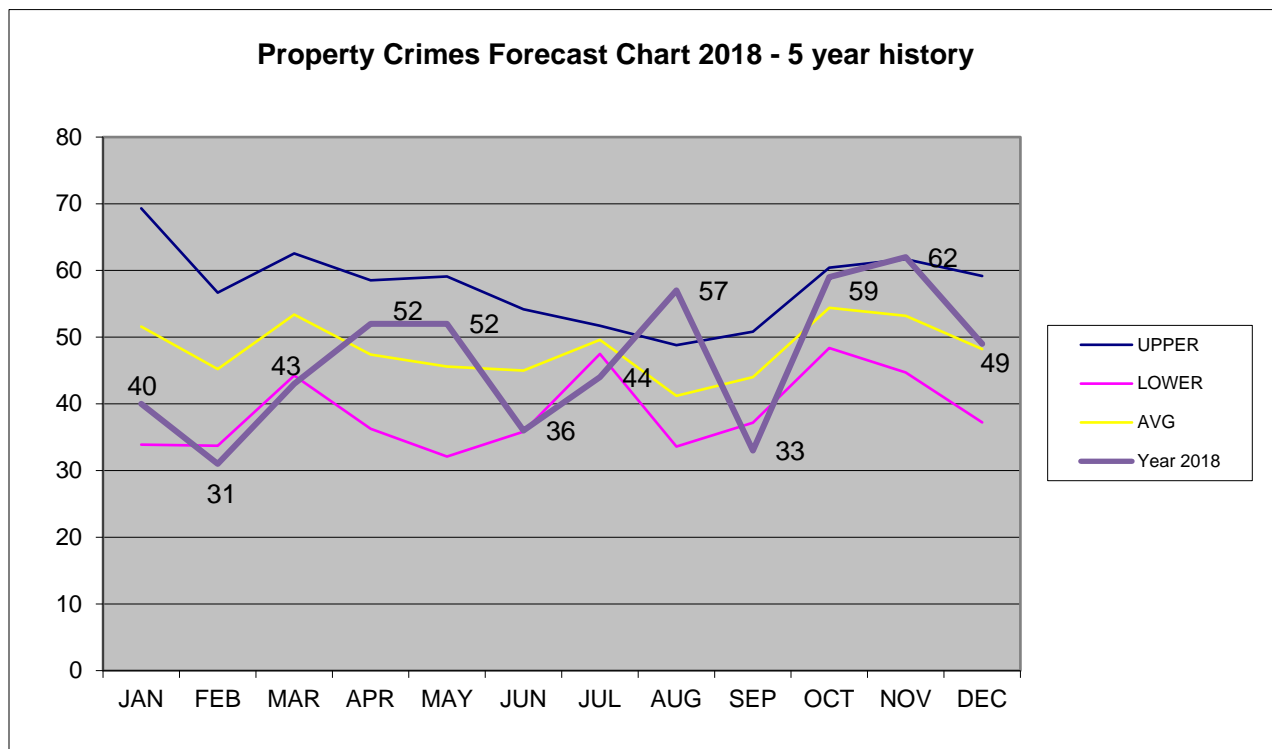
Breaking down crime by month can show different trends as well. The minimal linear increase in total crime as seen above, is also followed by the total average of crime by month. The average monthly crimes per month in the city are 64 spanning the years 2001 to 2018.



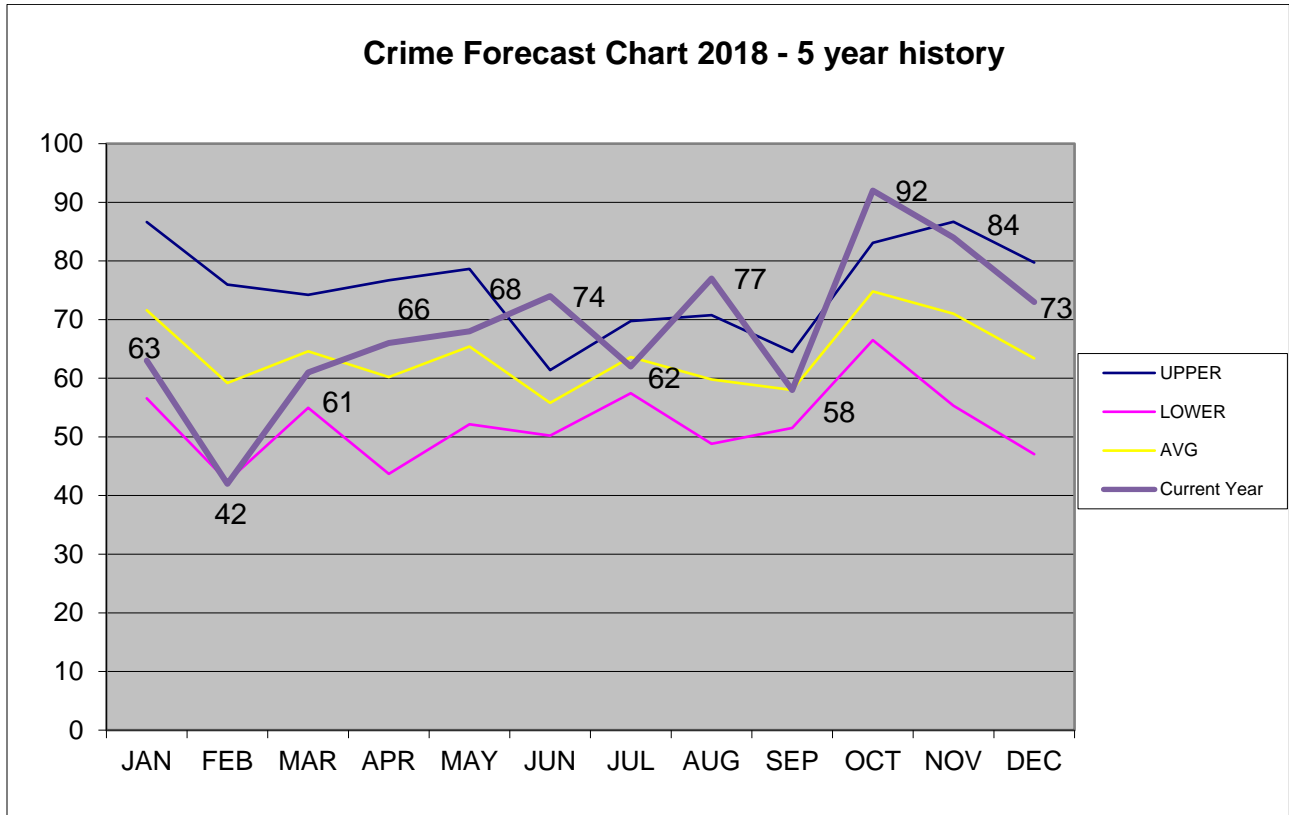
Burglary's within the city account for both residential and business located in the jurisdiction of the City of Shafter. Burglaries by year are demonstrated via the following chart:



Burglaries is one of the Uniform Crime Reporting (UCR) fields which the agency submits monthly to the Department of Justice. There are other property related crimes such as larceny, and vandalism which the agency forecasts as well. Below is the forecasting year end chart which shows a total of 558 property related crimes in 2018.



The 2018 crime forecasting chart can be seen below followed by the actual UCR reporting numbers:

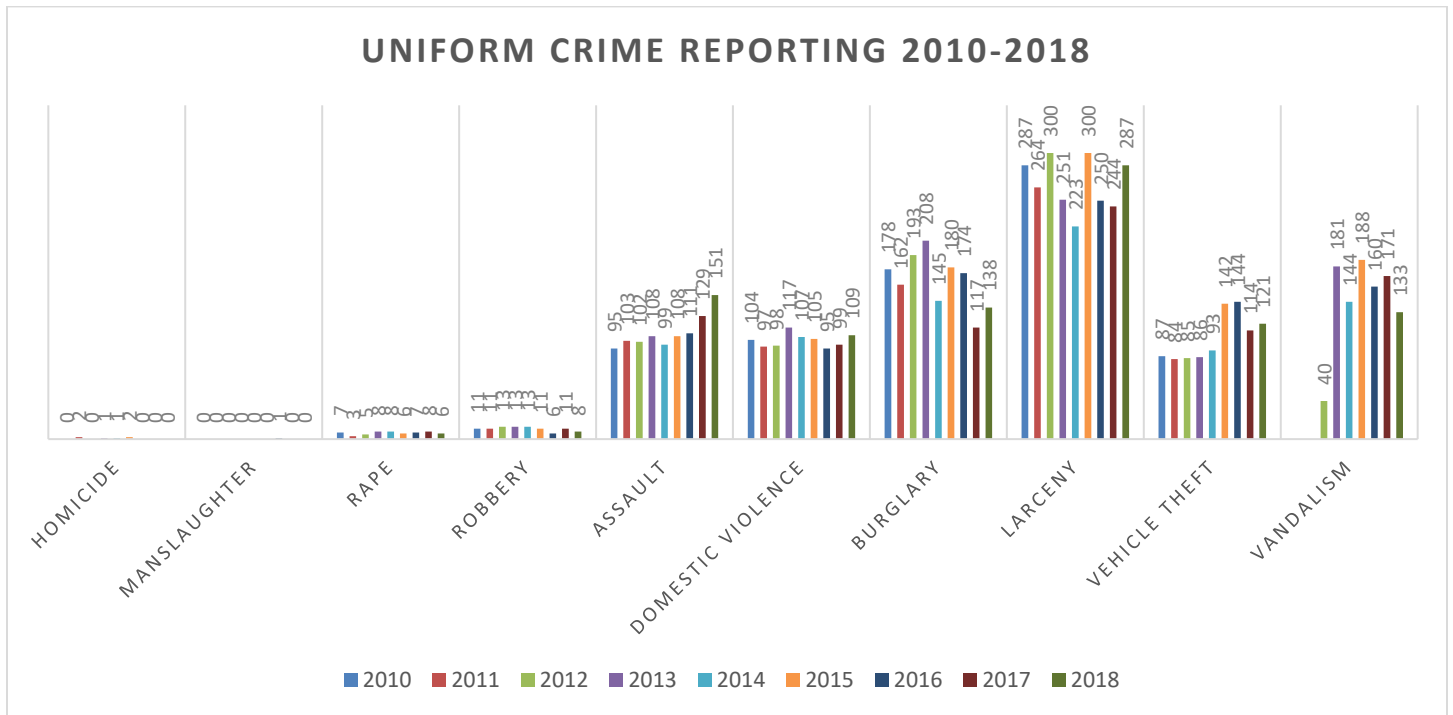


See below for actual category numbers reported via UCR.

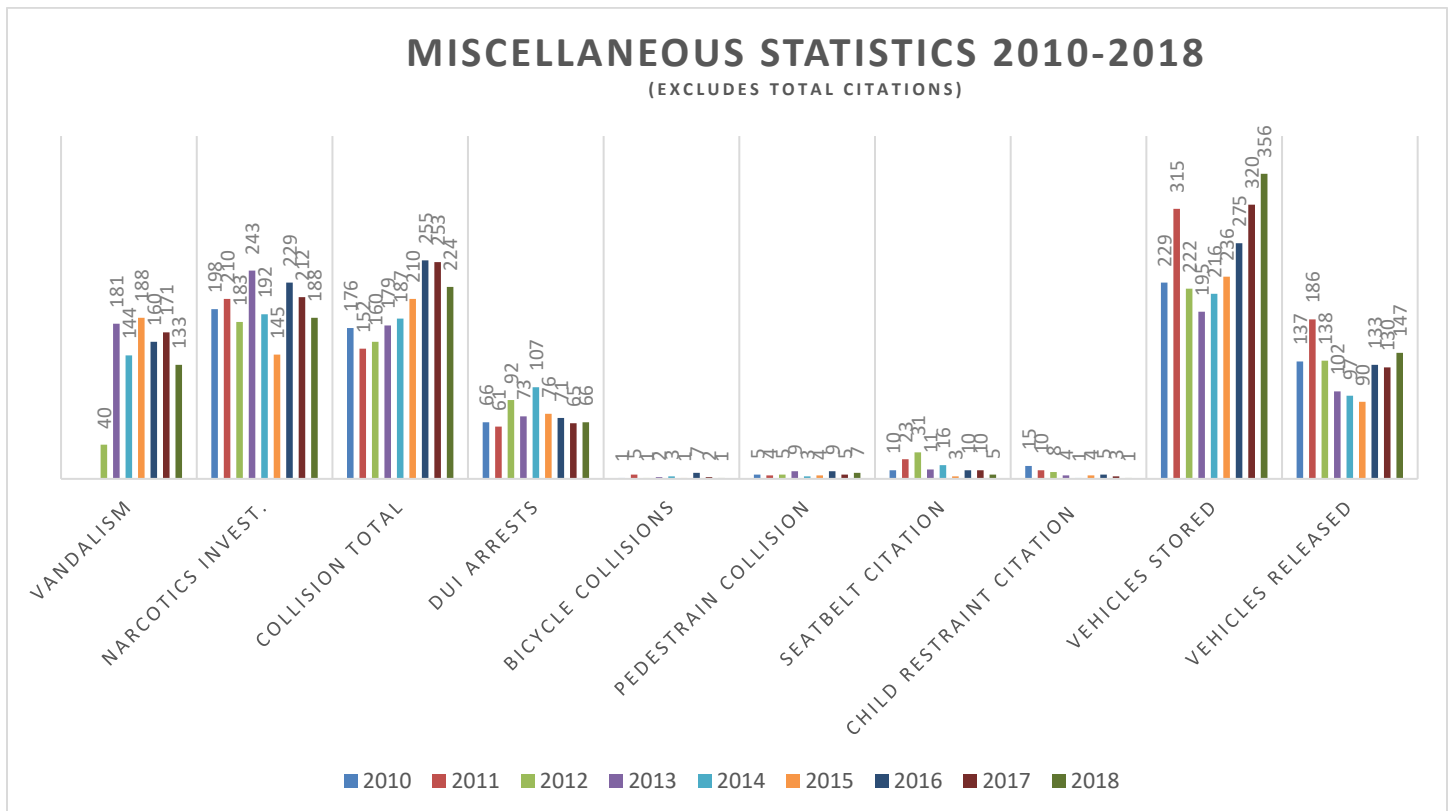
Crimes: 2018	Totals
Criminal Homicide	0
Rape	6
Robbery	8
Assault	151
Burglary	138
Larceny*	287
Vehicle Theft	121
Domestic Violence	109
<b>Grand Total</b>	<b>820</b>

\*Vandalism is not recorded in UCR

A longer look back at the individual categories can help as well as the chart below demonstrates.

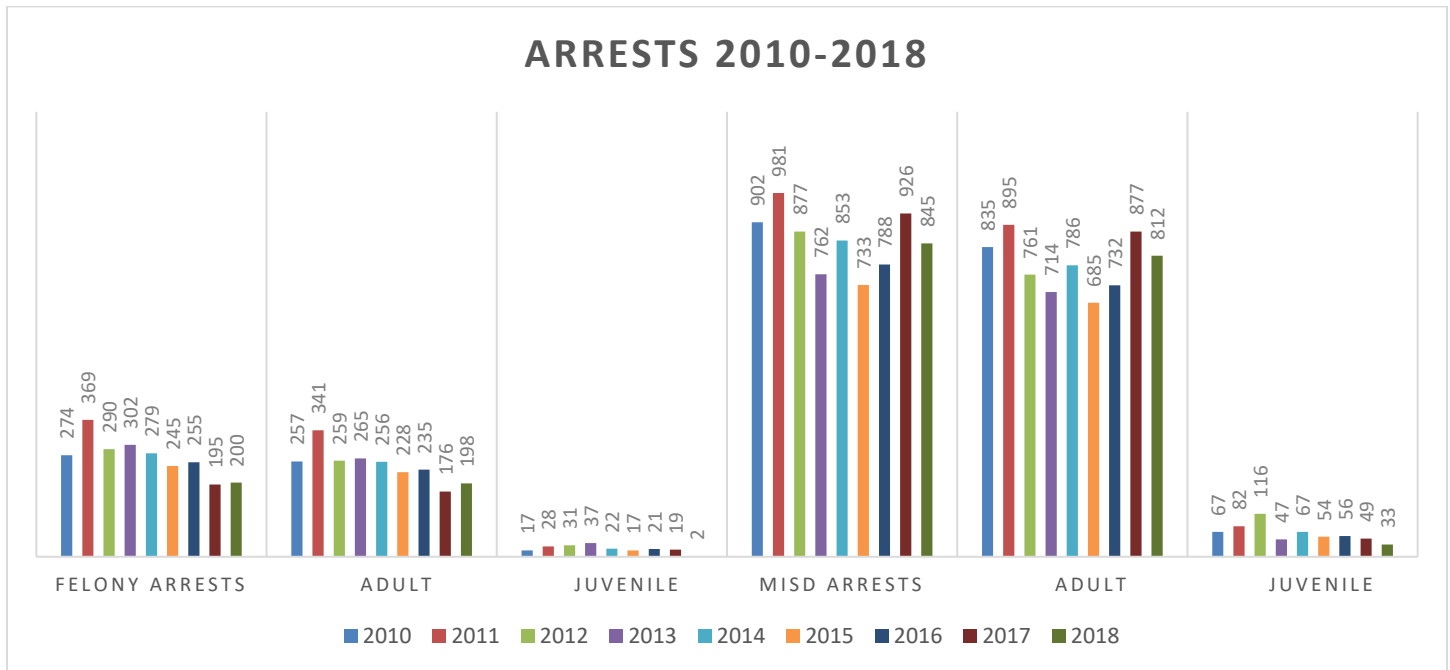


Looking at other categories can also shed light on the variety of activities by the police department as demonstrated below.

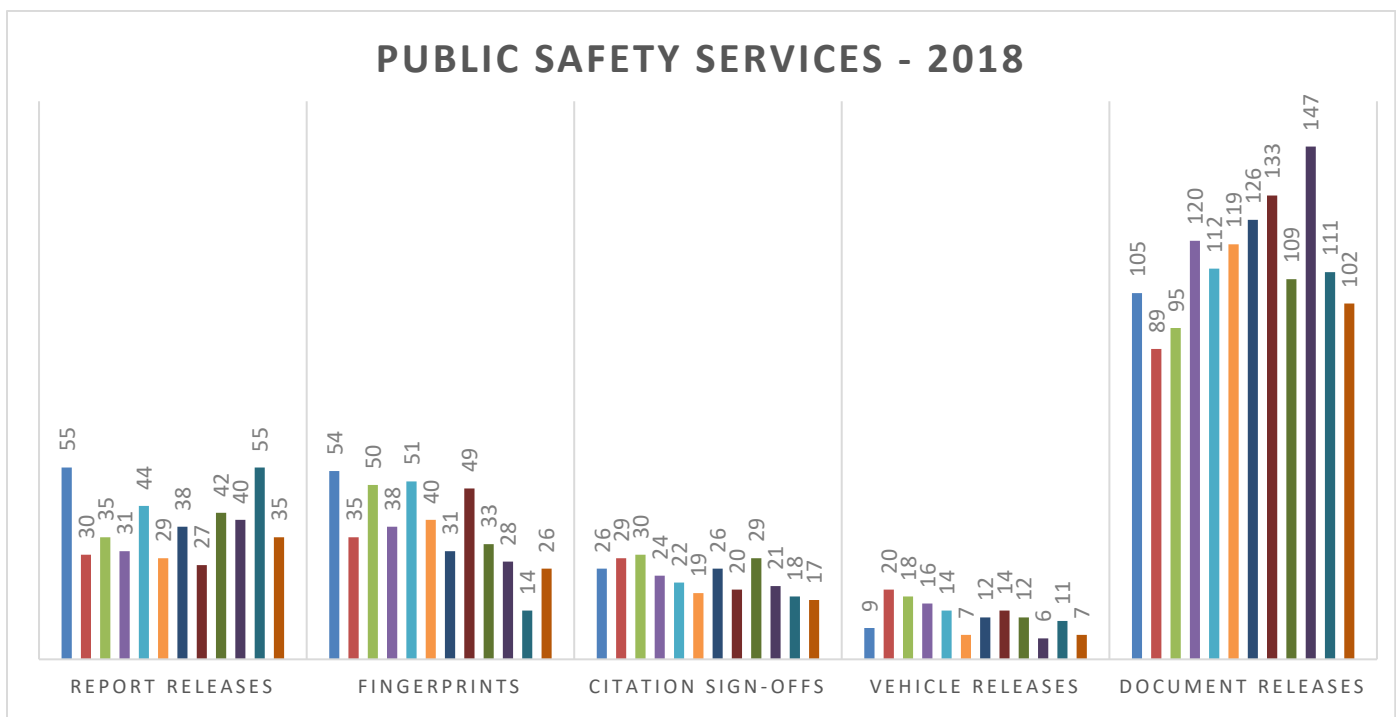




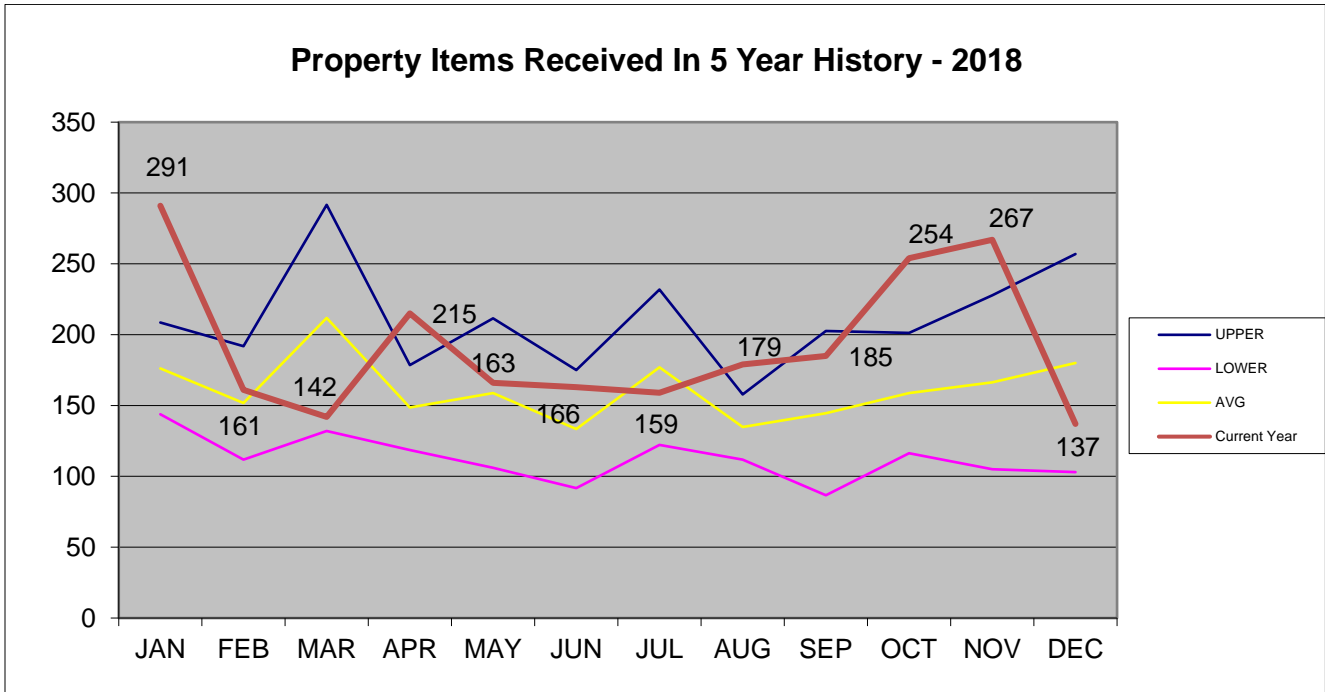
Finally, a breakdown in actual arrest statistics can be revealing as well as to the type of crime and by whom it is committed.



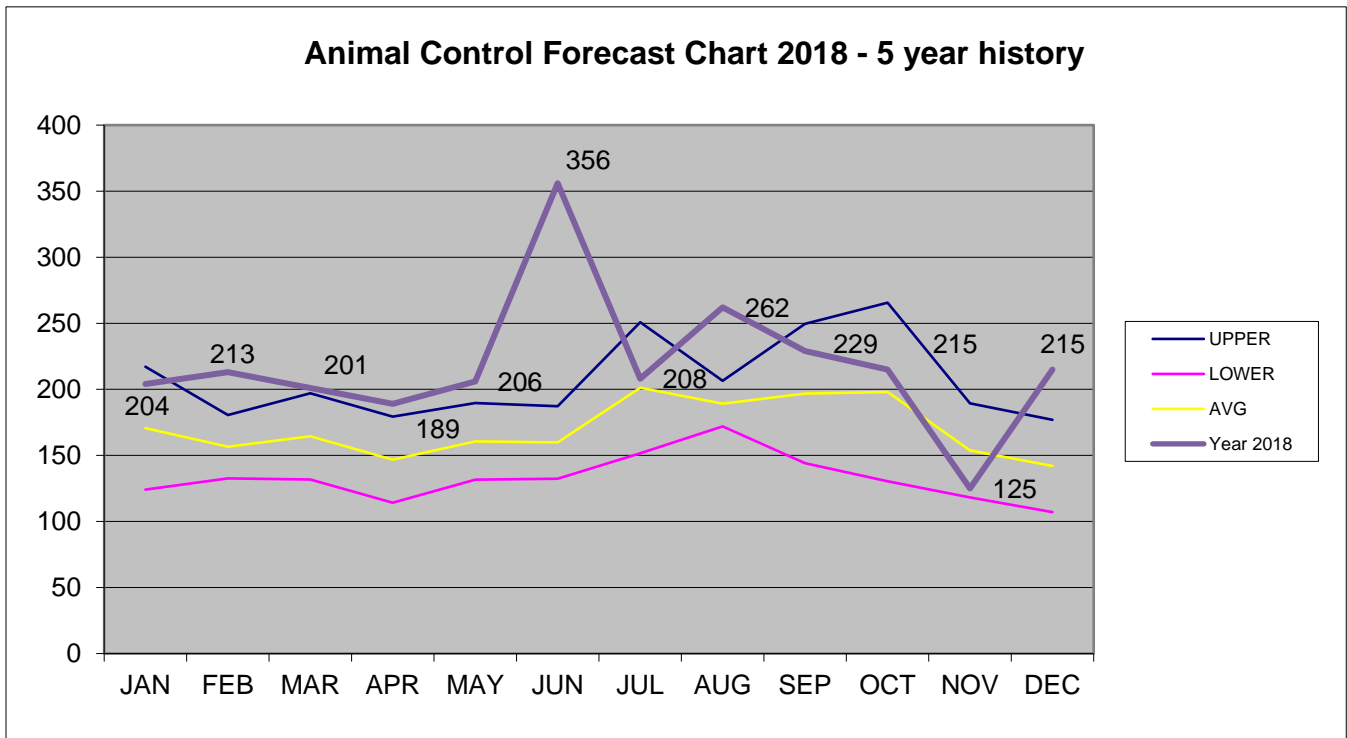
The Department additionally audits all the activities and work performed by Shafter personnel. Public safety services are tracking monthly output being handled by personnel as represented by the chart below. Public Safety Service totals for 2018 are as follows: 461 report releases; 449 fingerprints taken; 281 citation sign-offs; 146 vehicle releases; 11,243 cases purged; and 1,368 document releases.



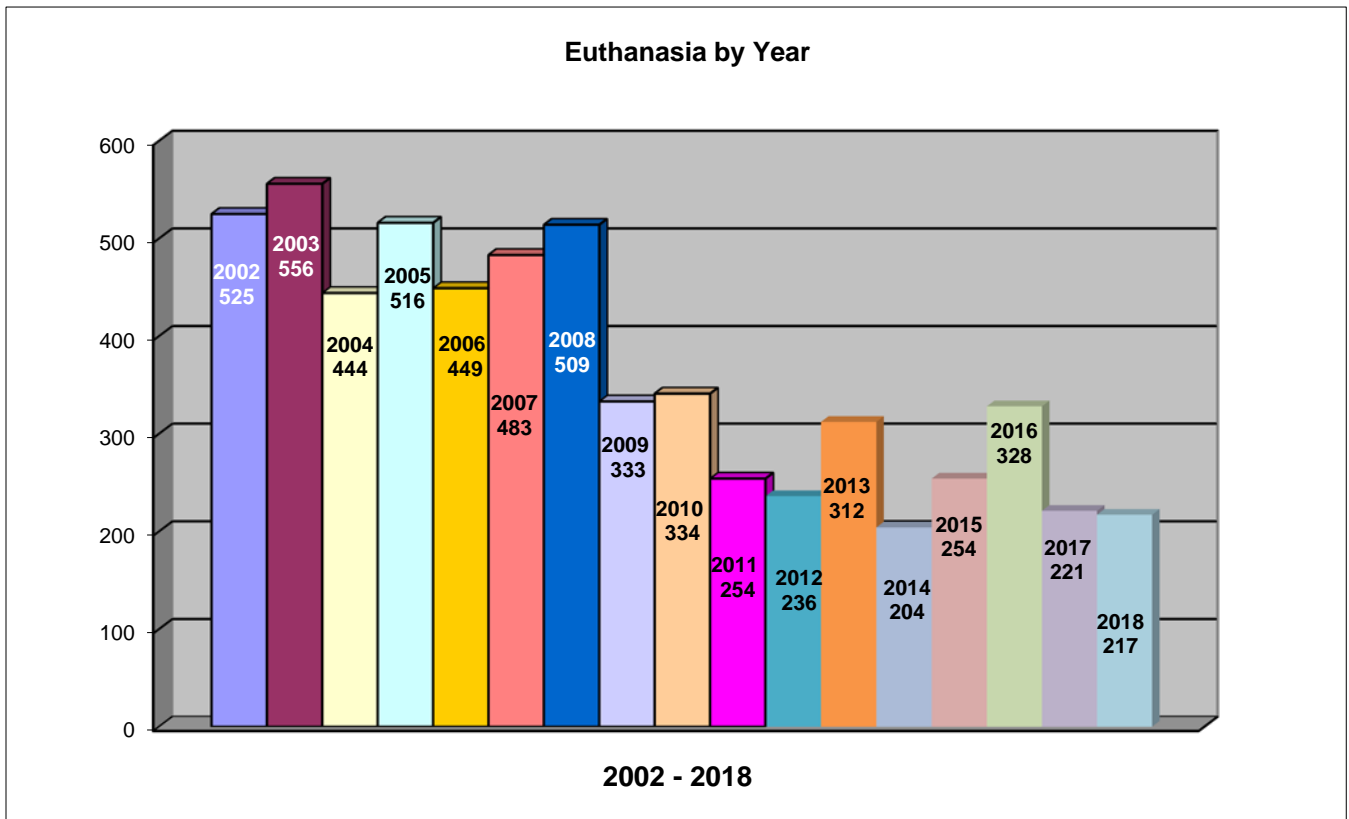
Property room has taken in 2,319 items during 2018. These may be items of evidence, safekeeping, or found.



The Animal Control unit has handled 2,673 animal service related calls. This also includes all handling of animals such as adoption processes, euthanasia, citations, warnings and the like.



Euthanasia numbers have remained low in 2018.



This last year, the City Council approved the purchase of CitizenRIMS, an add on module to our current CAD system. CitizenRims enables the general public to view crime mapping in the City, arrests, stolen vehicles and a number of category view options.

Anyone can view the Crime Graphic on the City/Police Department webpage (see next page for current layout).

## Department Reports



ONLINE PAYMENTS



NOTIFICATIONS &amp; ALERTS



SERVICE REQUESTS



JOB OPENINGS

The Shafter Police Department undergoes various inspections by entities such as the State of California Peace Officers Standards and Training (POST), the Kern County Grand Jury, Department of Public Health, State Fire Marshal, and various jail facility inspections.

The Office of the Chief of Police also provides reports and statistical information to our citizens and governmental agencies so they may be aware of the activities of the department and evaluate crime trends and our effectiveness in the community.

The City of Shafter now provides citizens with a Crime Graphic website that will provide police activity, crimes, most wanted posters, stolen vehicle records, arrests, crime charts and more as the website is developed. Citizens may access the information by clicking here: [CitizenRIMS Crime Graphic](#).

How to use the CitizenRIMS website:

**Past activity** lists 5 of the most asked about activities of the Shafter Police Department. You can search activity by three pre-programmed options, or you can select any specific date range in the calendar option. Note that the data only goes back to 2013.

When you conduct your search, you will see a numerical pin that corresponds to the call type. If you click on a pin it will give you the information from that call absent confidential information.

**Crime:** option will allow you to search by the three pre-programmed search options, or your choice by calendar. There are a number of specific crime types that you can choose from to develop your crime pin map. Again, clicking on a pin will show you the information that is legally allowed to be released to the public pertaining to the [Government Code 6254](#).

**Most Wanted:** displays current crime posters of individuals wanted by the Shafter Police in connection with criminal cases. Please read the advisement sections pertaining to this information option.

**Stolen Vehicles:** lists current vehicles that have been reported stolen and are not yet removed from the stolen vehicle system. Please read the advisement section pertaining to this information option.

**Arrests:** displays the arrests log for the last 14 days in the City of Shafter.

**Crime Charts:** Lists the main Uniform Crime Reporting requirements to the FBI and State Department of Justice numerically and by year. The department will also augment this information with additional chart information contained below on this page. New revised statistical reports will be uploaded within a couple of weeks after a new year.

**Sign-up for Alerts:** This allows anyone to sign up for a weekly or daily email which will provide notifications of activity by the Shafter Police Department. You may select the types of calls for service, crimes, wanted persons, or stolen vehicle information.

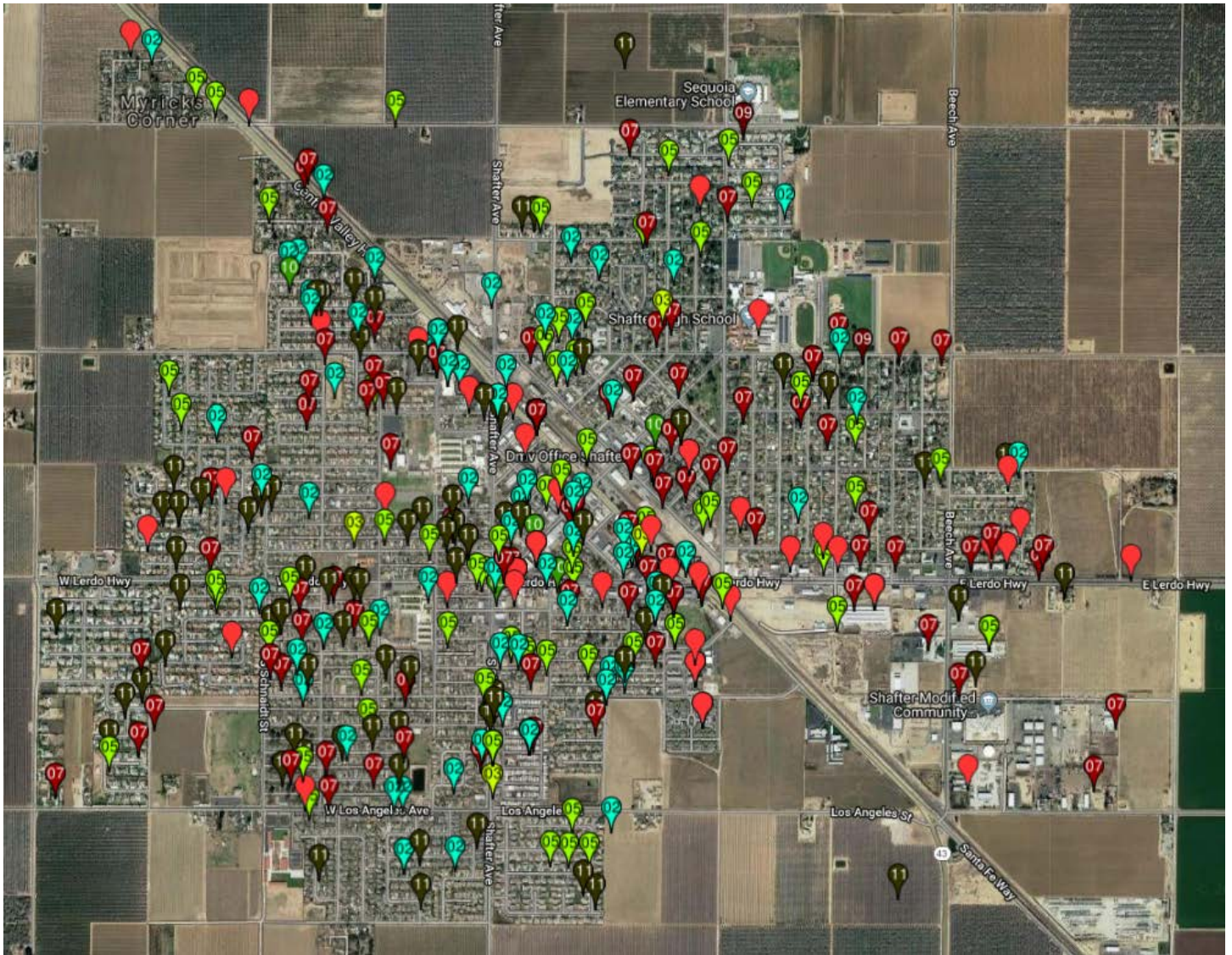
Listed here are various links to some of the available reports generated by the inspecting agencies and/or the department itself:

- [Animal Control Facility and Operations](#)
  - [Animal Control Workload Statistics](#) - 2002 through 2016
  - [Animal Control Handling Versus Euthanasia](#) - 2002 through 2016
- Patrol Operations
  - [Crime Stats 2001-2016](#)
  - [Shafter Police 2017 Year End Report](#)
  - Look for the 2018 Year End Report coming soon!!

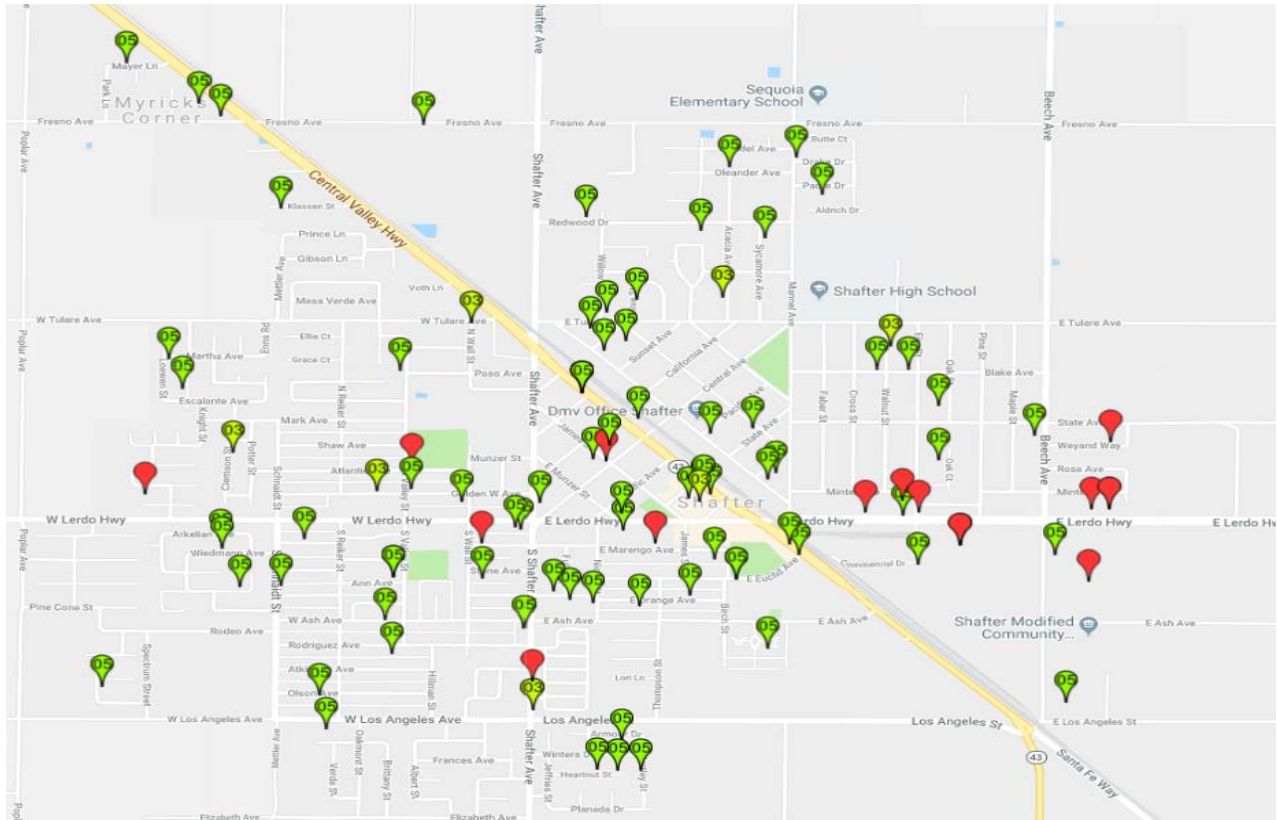
If you have questions or would like to inquire about the information provided here, please contact our Records Unit, Monday through Friday, 7 a.m. to 3 p.m. You may also send an email regarding your inquiry here: [Records Inquiry](#).

The following screenshots show incidents responded to by the SPD in the primary core of the city. The map does not include all city boundaries and is limited to showing only 499 incidents at a time. Date range changes may need to be made to cycle through all 17,000 incidents for an entire year by quarter for a visual mapping assessment.

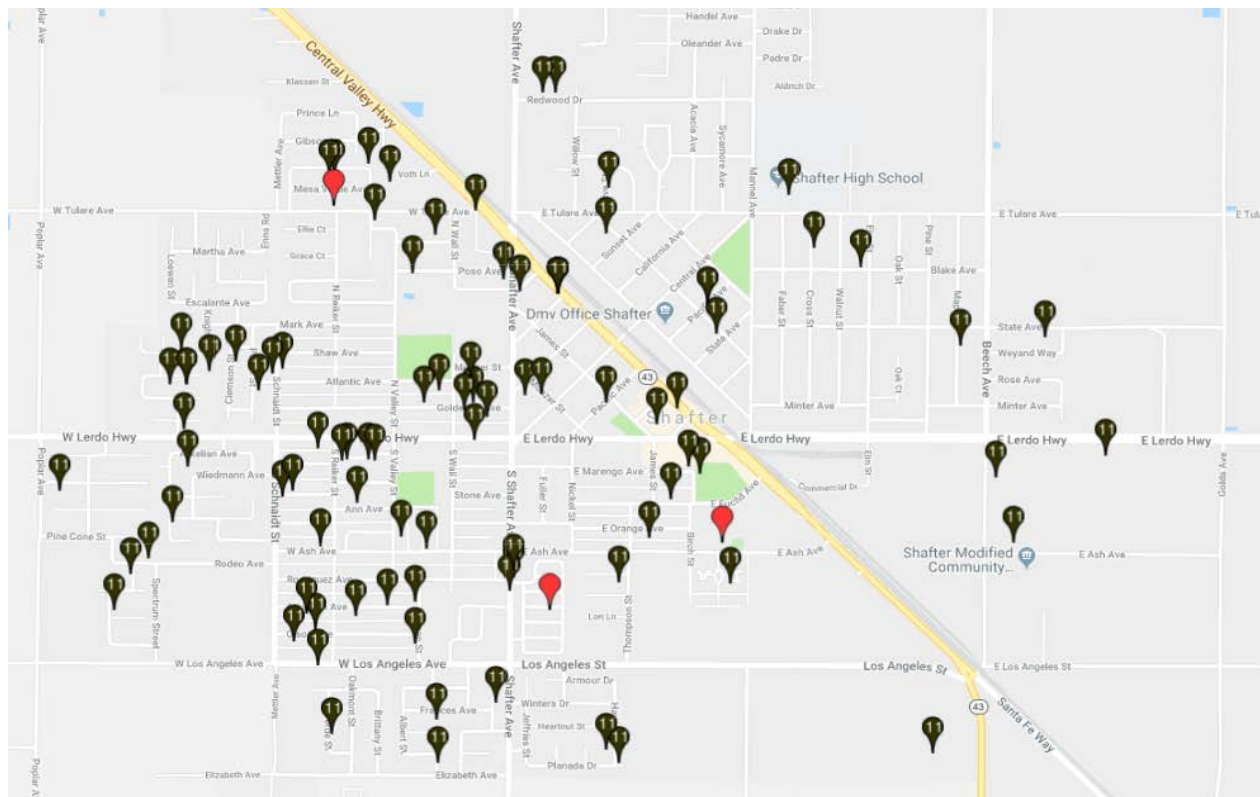
Each balloon number/color represents a different type of crime. Solid color balloons represent more than one crime at the same location. Specific releasable information may be made for each balloon such as type of crime, address by block, date and time of occurrence, case and incident number.



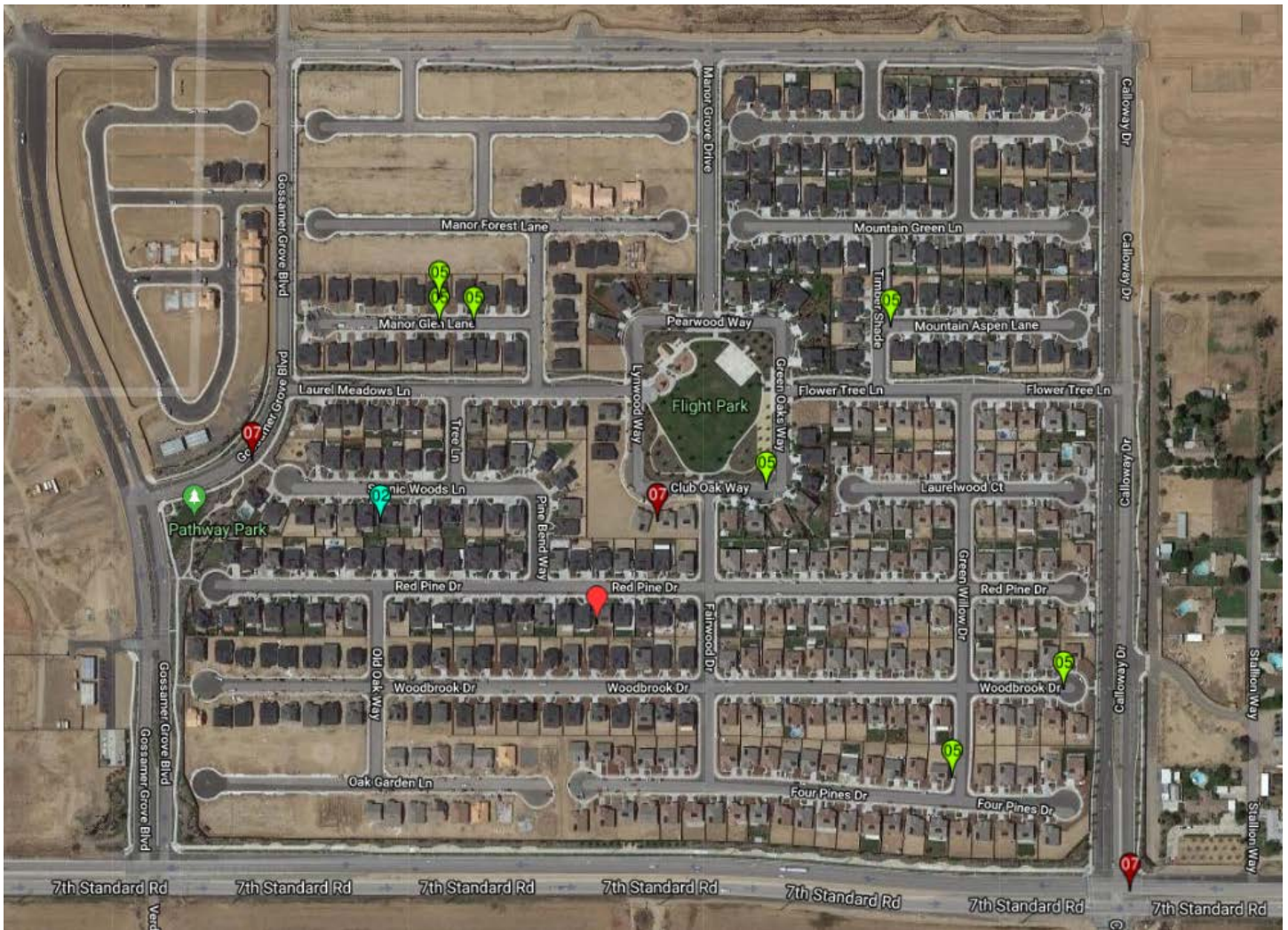
CitizenRIMS allows the user to select a variety of searches for types of crimes for types of crimes such as the below map showing burglaries and attempted burglaries in the city core:



Likewise, the below map shows a pin map of stolen vehicles in the city core for 2018.



Lastly, all the searchable incidents, crimes, arrests, or other categories can be viewed in particular areas. For example, the below screenshot shows all the crime for 2018 in the Gossamer Grove area of the City of Shafter.



In closing, we hope that the statistical information provided here is helpful and enlightening for the community.

If there are any questions or assistance needed to understand the information provided, or how to use CitizenRIMS, we hope that the community will contact us for assistance. We believe that CitizenRIMS will enable the citizens of Shafter to navigate and understand crime and crime trends in the city to a much greater degree than ever before. Any community member can contact the police department for assistance in using or understanding the program.